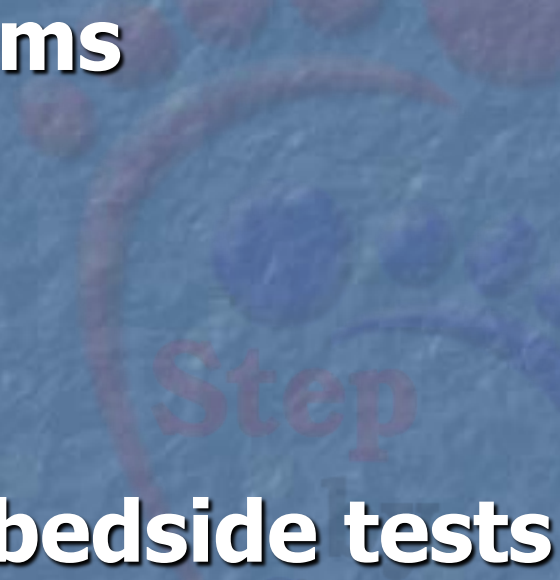


Clinical diagnosis of PAD

- **Symptoms**
 - **Signs**
 - **Simple bedside tests**
- 

Clinical diagnosis of PAD

- **Symptoms**
- Signs
- Simple bedside tests

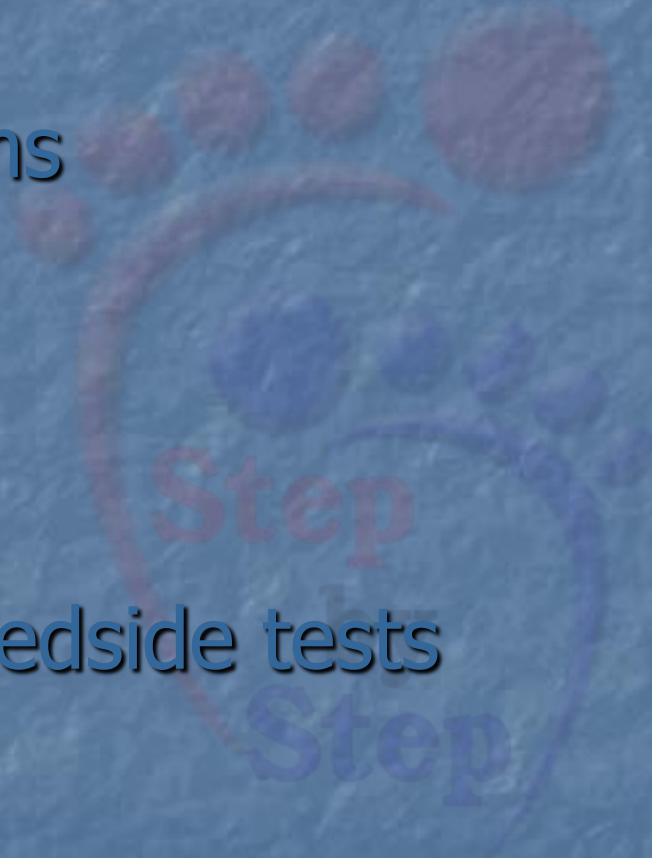
- **Asymptomatic**
- **Atypical symptoms**
- **Intermittent claudication**
- **Rest pain**

Intermittent claudication

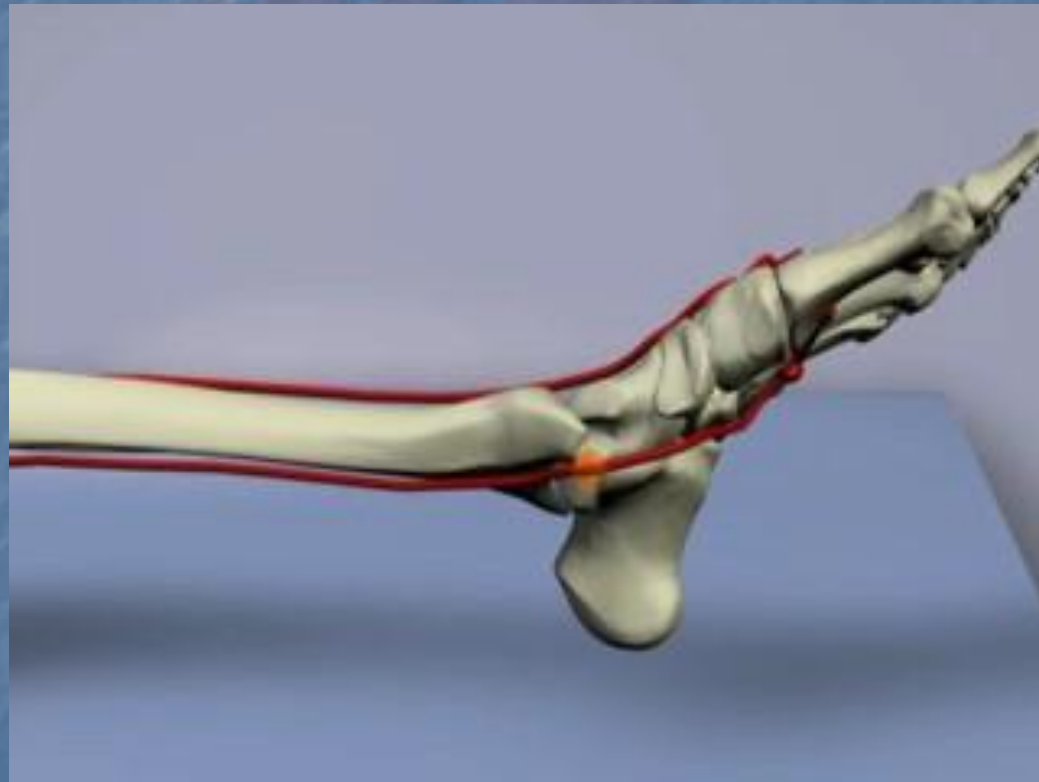
- **Only one third of patients with PAD present with IC.**
- **IC is defined as pain, cramping, or aching in the calves, thighs, or buttocks that appears reproducibly with walking exercise and is relieved by rest.**

Clinical diagnosis of PAD

- Symptoms
- **Signs**
- Simple bedside tests



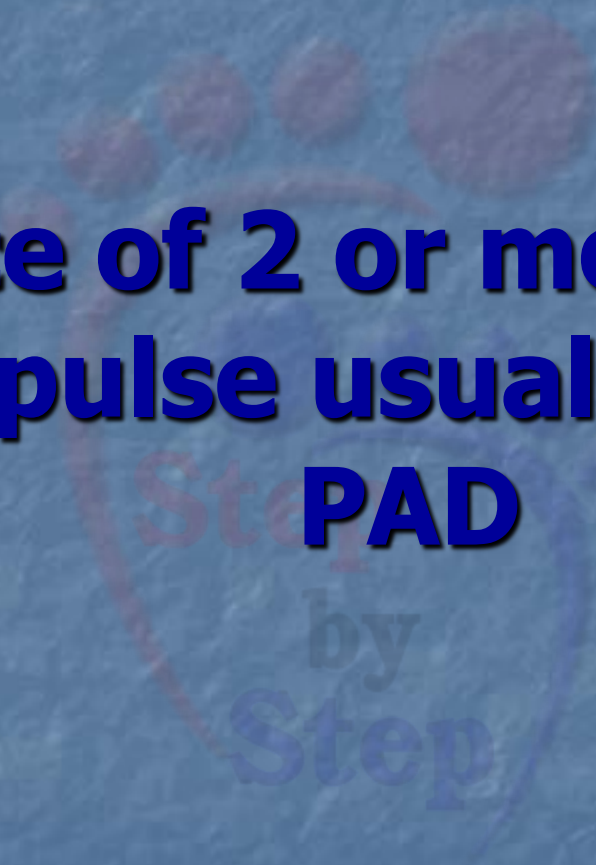
Arterial blood supply to the foot





1- Palpation of pedal pulses





**Absence of 2 or more of the 4
pedal pulse usually indicate
PAD**

2- Temperature Gradient

Temperature differences can be reliably assessed only when limbs have been exposed to a constant room temperature for 10-20 minutes.



3- Color changes



Clinical diagnosis of PAD

- Symptoms
- Signs
- **Simple bedside tests**

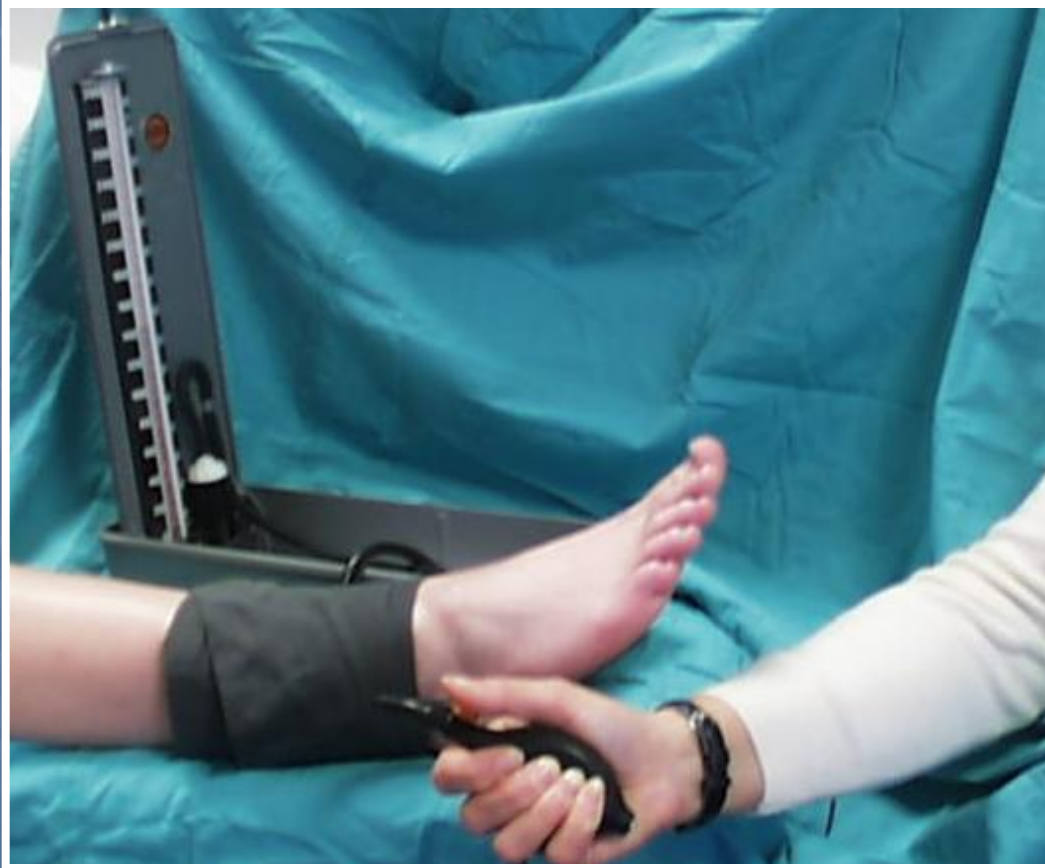


Handheld doppler ultrasound

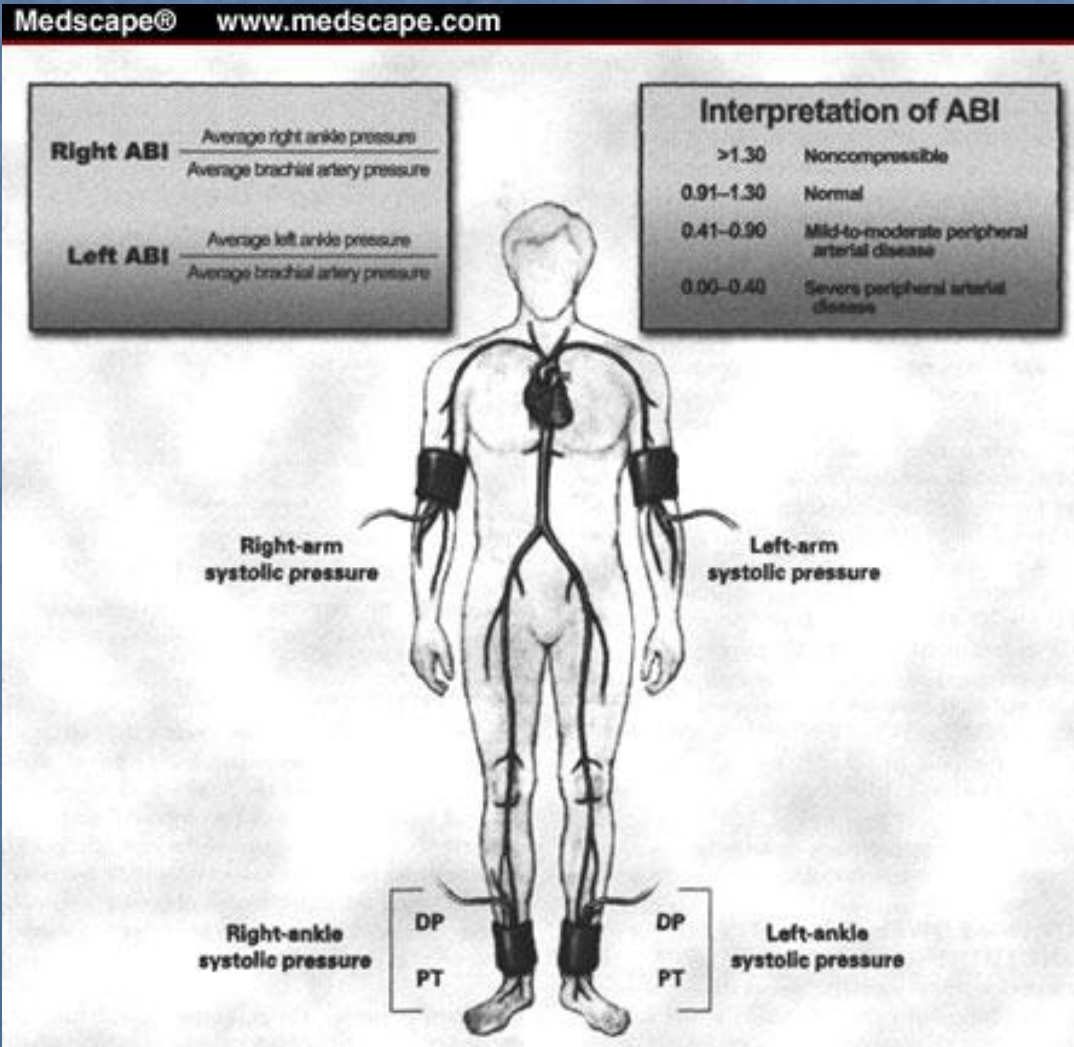


Monophasic

Measurement of the ankle pressure



Measurement of ABPI



- 0.95- 1.3 Normal
- < 0.9 PAD
- > 1.3 Unreliable

Step
by
Step

ABPI > 1.3

